



Year 6 Transition Parents' Evening



Welcome to QE Girls' School



Music by

Zephaniah Gilfillian 7KFD (Piano)

Irina Radulet 9JFD (Piano)

Anjana Arunkumar 9GWN (Flute)



Welcome



Mrs Walker, Headteacher



Welcome



Aretha Waterberg, Head Girl



English Department



**Ms
Kenney-Dwyer**
Head of English



Ms Madigan
Head of English



English Department

- Each form will have 6 lessons each fortnight with one (max two) teachers
- All taught in **mixed ability classes** (form groups) throughout
- They will work in exercise books; some assessed work will be done on paper
- Strong, experienced team of English specialist teachers



Programme of study:

- **History of the English Language**; a study of how English has evolved and a timeline of key writers
- **Creative Writing**
- **Study of a modern novel**
- **Poetry**
- **Introduction to Shakespeare** (*A Midsummer Night's Dream*)

Equipment needed

- Stationery
- Reading book
- Small dictionary





Homework

- Short tasks will be set according to the homework timetable which complement and extend the learning done in class
- These will not necessarily be written tasks (reading, research, planning, learning words)



Assessment

On-going teacher assessment focused on **reading** skills, **writing** ability and **speaking & listening** aptitude

Most written assessment will be 'live marked' with the teacher so that feedback can be instantly acted upon

Some work set on Google classroom will be 'Mote' marked

Most teacher assessment is formative (providing feedback with areas to develop)



Maths Department



Mrs Khodabacus
Head of Maths



Year 7 Maths teaching groups

In the first few weeks at Queen Elizabeth's Girls' School, students in Year 7 will:

- Have 7 hours of Maths,
- Be taught in mixed ability groups,
- Sit their CATS test and
- Sit their GL assessment (baseline test)

The results achieved in the CATS test and the GL assessment will be used to determine the teaching groups that students will be assigned to.

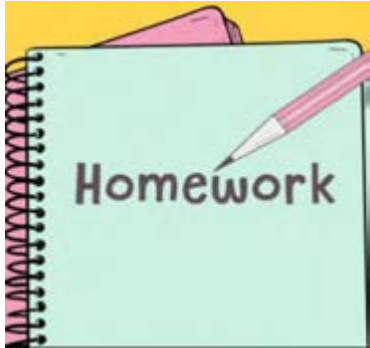




Topics

- Data - Analysing and displaying data and probability
- Number - Number skills, Fraction, Decimals and percentages
- Algebra - Expressions, functions, sequences and graphs
- Ratio and proportion
- Geometry - Lines, Angles, Transformation of shapes and mensuration

Maths Homework



- Homework timetable
- 2 pieces of home learning lasting half an hour each
- Set weekly
- Paper based or on Mathswatch



Interactive Online Resources

TTRockstars - Close gaps in numeracy

Mathswatch - Explanatory clips and interactive questions

ActiveLearn - Online textbook for practice question

Enrichment

Maths Club - Every Wednesday Room 311 from 3.15-4.15

UKMT Junior Maths Challenge - Spring term

TTRockstars Competition - Summer term



Assessment and Feedback

- **2 Progress Review Tests**
- Topic list shared with the class on google classrooms
- Test feedback lesson takes place within 2 weeks of the assessment
- Feedback sheet (RAG sheet) will be provided so students can improve

Maths Equipment

All students are expected to bring the following equipment to every maths lesson:



- Maths exercise book and ninja booklet.
- Blue or black pen and green pen, highlighters, pencil, eraser and sharpener
- **Scientific Calculator (CASIO)**
- 30cm ruler
- Pair of compasses with pencil and Protractor
- Glue stick



How can you support your child in Maths?

- Check that home learning is completed to your child's best ability
- Ensure explanatory clips on Mathswatch are watched and interactive questions are attempted on a regular basis to help with recall and retention
- Encourage the use of TTRS 10 minutes daily to develop accuracy and efficiency in times tables
- Correct maths equipment (some equipment can be purchased via wisePAY)



Science Department



Ms Myrtle
Head of Science



Science Department

- Each form will have 6 lessons each fortnight with one (max two) teachers
- All taught in **mixed ability classes** (form groups) throughout
- They will work in exercise books; some assessed work will be done on paper
- Science is three subjects but in KS3 taught as topics
- Topics in all years are based on either Biology, Chemistry and Physics
- Later in the year homework will be **RECAP** from the beginning of the year to help consolidate learning
- The google classroom has any powerpoints used in lessons uploaded so if lessons are missed the content can be accessed



Science Key topics in Year 7

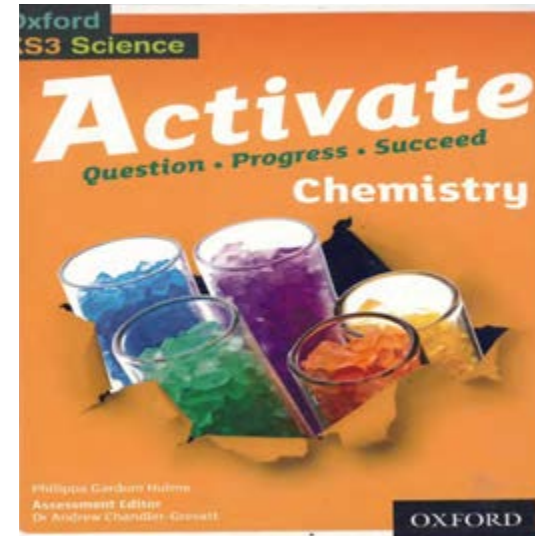
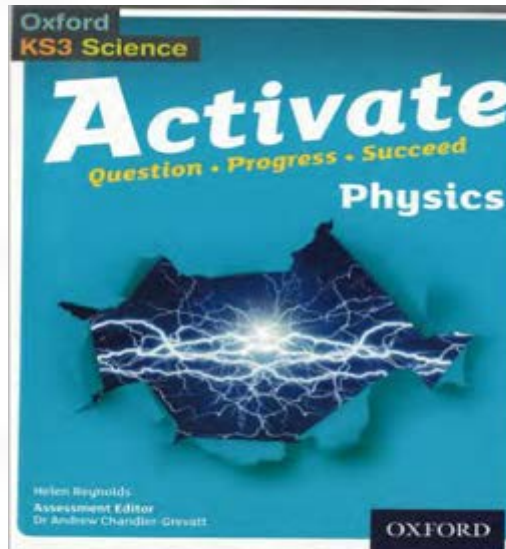
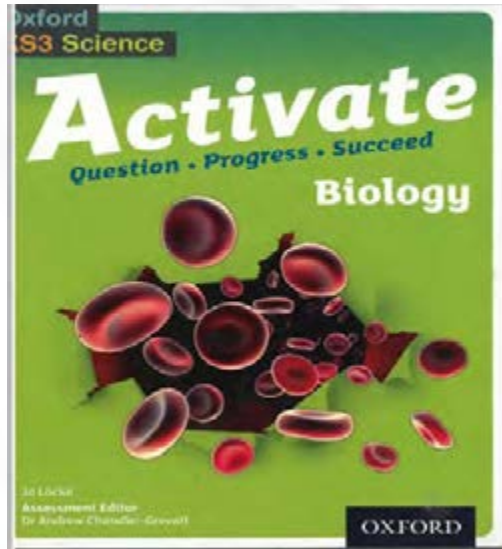
- Particles
- Forces
- Cells
- Sound and light
- Atoms, elements and compounds
- Separation techniques
- Structure and function of body systems
- Space

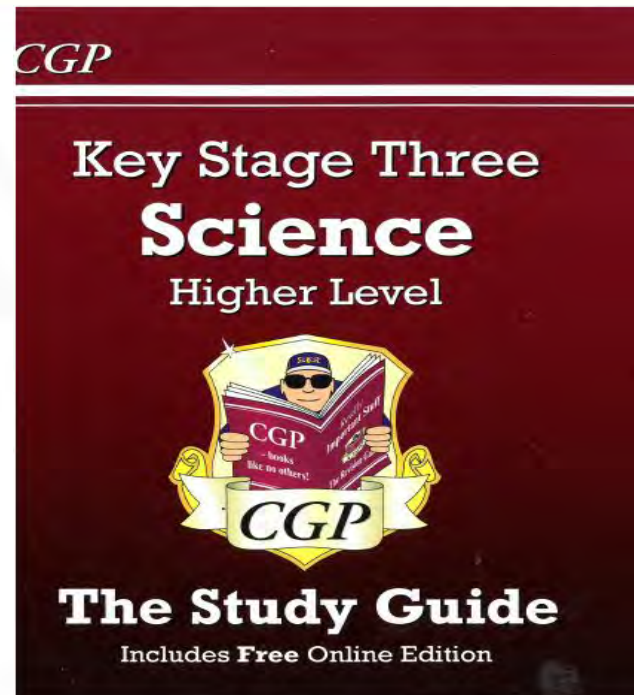
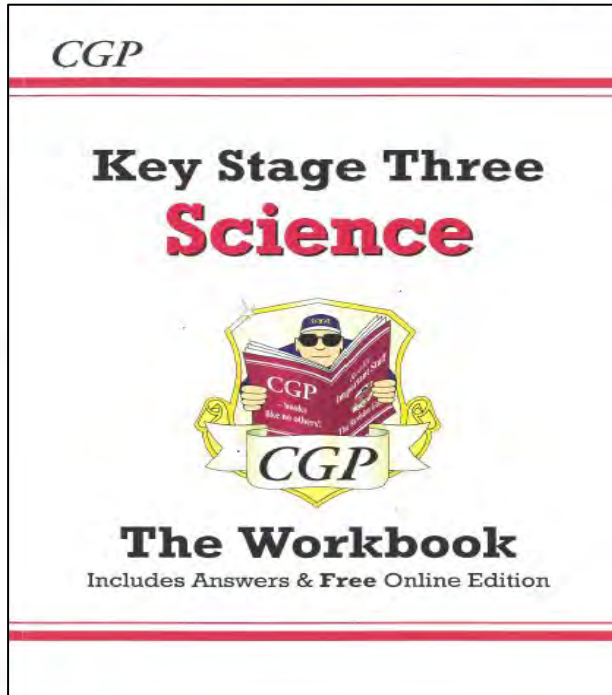


Kerboodle

Online textbook and revision platform

All students will be given a log in





CGP Revision Guides and Workbooks are helpful to help them apply their knowledge and consolidate learning outside the classroom

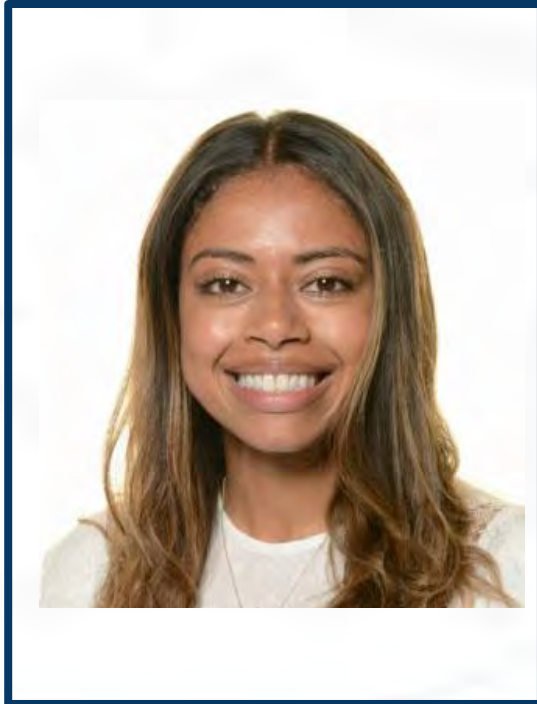


How can you support your child in Science?

- Ask your child to explain what they have learnt this helps them consolidate learning.
- Check they have done their homework (including if they have a kerboodle quiz).
- Be curious with them....watch tv programmes together about Science e.g. Frozen Planet 2
- Take them to the Science or Natural History museums (they are free)!



Pastoral Structure



Mrs Campbell
Head of Key
Stage 3,
Associate
Assistant
Headteacher



Mrs Doel
Head of Year



School Uniform

Smiths
schoolwear

UNIFORM4KIDS

Compulsory Items

- Navy blazer with Tudor rose logo
- Light blue kilt with Tudor rose logo
- Light blue open neck blouse



School Uniform

Optional Item

- Navy v-neck pullover with embroidered Tudor rose logo

Winter coat/ Tights and socks

- Navy/ black winter coat (no logos)
- Black tights (October - May)
- White ankle socks (September, May - July)



PE Kit

Compulsory Items

- Navy QE polo shirt
- Navy QE school leggings OR Navy QE school shorts
- Navy/ black swimsuit & swim hat
- Suitable trainers (plimsoles and high top trainers are not permitted)
- White or light blue sports socks

Optional

- Navy tracksuit top



Footwear

- Appropriate footwear can be purchased from any supplier, providing it meets the requirements stated:
 - Leather or leather-look plain black flat formal shoes
 - No plimsoles, trainers, Converse, Vans
 - No boots (Kicker boots)



Jewellery

- Only religious necklaces
- No bracelets or rings
- No nose studs or facial studs
- Earrings
 - Plain gold or silver stud earrings in the bottom lobe



Mobile Phone Policy

- Students are not permitted to bring a smartphone to school
- A smartphone is defined as any phone capable of taking an image or video, being connected to the Internet
- Students may however bring a 'non-smartphone', i.e. Nokia or similar phone to school providing that it is switched off and out of sight at all times
- Spot checks will be made and any phones that either do not conform or are found to be switched on will be confiscated and retained by the school in accordance with our Mobile Phone Policy



Watches

- Simple functioning digital watches and old fashioned watches are allowed in school
- Smartwatches are not permitted
 - E.g Fitbit, Apple watch, Garmin



Year 7 Pastoral Team



Ms Naing
7SNG
Maths



Ms Manolopoulou
7CMU
Religious Studies



Mr Callaghan
7ACH
English



Mr Roberts
7JRS
Modern Foreign
Languages



Ms Mildrin
7SMN
Maths



Mr Petrie
7RPE
Technology



Ms Hirani
7SHN
Technology

Your daughter will see her tutor at the start of every morning for 20 minutes. We call this tutor time. From 8.40 - 9.00am a range of different tasks will be completed before lessons begin. Your daughter will see her form tutor for 10 minutes at the end of everyday also. Form tutors will be one of the first points of call for any issues your daughter may have.



Tutor Time

Assembly once a week

Accelerated Reader

Votes for Schools

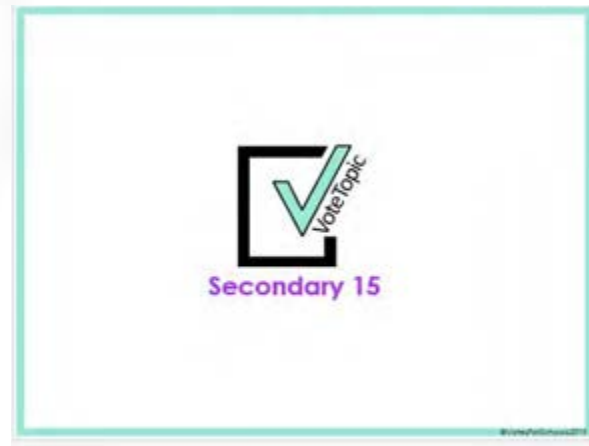
What's in the news?

Weekly Quiz

We ask that you sign your daughter's planner on a weekly basis



Accelerated Reader





Pastoral System

Alongside the tutors and the Head of Year there are a team of people who support the pastoral care system.

These include the following staff:

- The Inclusion Department
- Child and Adolescent Clinical Psychologist
- Attendance Officer
- Educational Welfare Officer
- The Safeguarding Team

Need someone to talk to?
Something making you unhappy?

Queen Elizabeth's Girls' School
Educating Women of the Future

Your Form Tutor and Head of Year are available for you to speak with if you have any concerns, or if anything is making you or your friend/s unhappy.



If you have an extremely serious concern, please go straight to Mrs Parker, Assistant Headteacher.

Mrs Parker is our Designated Safeguarding Lead (DSL) and her office is next to room 217.



SENCo & Learning Mentor



Mrs Parker
SENCo and DSL



Mrs Matty
Deputy SENCo



Ms Stewart
Learning Mentor



Pastoral Support & EAL Support



Ms Hillman
Pastoral Support



Ms Shipton
EAL Support



Medical and Welfare

If your daughter is taken ill at school the Medical and Wellbeing Officer will contact you.

Medication

- If your daughter has Asthma or requires an Epi-pen she must keep one on her at all times
- Please provide one spare on the first day of school
- Any pills for headaches/period pains, prescriptions etc., will only be given with the written request and permission of parents/carers.

Allergies

- Please ensure we are aware of any allergies so that she can treat your daughter correctly



The School Day

Activity	Time
Arrival (from)	8:00am
Registration	8:40am – 9:00am
Period 1	9:00am – 10:00am
Period 2	10:00am – 11:00am
Break	11:00am – 11:15am
Period 3	11:20am – 12:20pm
Period 4	12:20pm – 1:20pm
Lunch	1:20pm – 2:00pm
Period 5	2:05pm – 3:05pm
Registration	3:05pm – 3:15pm

- We operate a two week timetable consisting of 50 one hour periods
- The timetable begins on a “Week A” and alternates between a “Week A” and a “Week B”
- The pattern of lessons in each week will be completely different and so it is important to double check each evening in readiness for the following day



Allocation of lessons

The Year 7 curriculum:

English	6 hours
Mathematics	7 hours
Science	6 hours
Modern Foreign Languages	6 hours
Geography	3 hours
Physical Education	4 hours
History	3 hours

Design Technology	3 hours
Art	2 hours
Computing	2 hours
Performing Arts <small>(Dance, Drama and Music)</small>	3 hours
PSHE	2 hours
Religious Studies	2 hours



Home Learning

In Year 7 students will receive a structured home learning timetable. Each subject task is for 30 minutes. This timetable will be shared with you in September.

- Maths- 4 pieces per fortnight
- English- 2 pieces per fortnight
- Science- 3 pieces per fortnight
- French/Spanish- 2 pieces per fortnight
- All other subjects- 1 pieces per fortnight
- Performing Arts/PE/Computing set as and when needed



Google Classroom

A wide variety of tasks are set to suit the strengths/ interests of all students.

School Attendance

Excellent attendance is expected, however

- Should your daughter be unwell or unable to attend school, please contact the school to inform the Attendance Officer
- Once the registers close and a student is absent, if we have not received communication from parent/ carer, a text will be sent home

Requests for planned absence must be made in writing to:

- Head of Year if for medical reasons (providing evidence)
- Headteacher for all other reasons



Attendance Percentage	Number of days missed	Number of lessons missed
100%	0 days	0
99%	2 days	18 lessons missed
97%	6 days (more than a week!)	54 lessons missed
95%	9 days	81 lessons missed
94%	11 days (more than 2 weeks!)	99 lessons missed
93%	13 days	117 lessons missed
92%	15 days (3 full weeks!)	135 lessons missed
91%	17 days	153 lessons missed
90%	18 days	144 lessons missed
85%	28 days (over 4 weeks!)	252 lessons missed



Communication with school

- For support with pastoral care the first point of contact is your daughter's **form tutor**, who will escalate issues to the Head of Year where appropriate
- For support with curriculum queries the first point of contact will be your daughter's **subject teacher**
- All communication should be directed to the school office via email (**For The Attention Of: _____**). The office team will direct your communication to the appropriate member of staff for response



Communication with families

We mainly communicate via email and text. Please check our website and Twitter for regular updates on what is happening in school





Extra Curricular Activities

There are a wide range of extra curricular activities for students to voluntarily attend. Their organisation can involve staff and or sixth form students. All after school activities end by 4.30pm at the latest. These include:

- Sports clubs
- Homework club in the library
- School Council
- STEM club
- Art club
- Debate club
- Drama - school production
- Journalism club
- Choir
- Orchestra
- Duke of Edinburgh Award (from Year 9)
- Year 7 Police Cadets
- Science club
- Myths, legends and folklore
- LAMDA
- Around the World Cooking club



The Library

Homework club: Every day after school until 4.15pm

The library is used for lessons, the accelerated reader programme and for homework club (which is run by our LSA's)

There are frequent events and competitions taking place in the library also!

Ms Bridger



Accelerated Reader

- Accelerated Reader is a computer-based program that we use to monitor reading practice and progress
- It helps us to guide students to books that are suited to their reading level
- Students take short quizzes after reading a book to assess their comprehension
- The aim is to motivate students to read frequently, support good reading and progress





Rewards

Achievement Points: We operate an electronic points based system where students can accrue achievement points from any member of staff for demonstrating the high standards that we encourage. Form tutors can monitor and celebrate these achievements on a daily basis.

- Star of the Week
- Accelerated Reader - Word millionaires
- Achievement Point - bronze/ silver/ gold/ platinum certificates
- Student of the term - allocation of badges for students making exceptional progress each term



Lockers

Students will be given the use of a locker for the next five years in which to keep books and equipment. A £10.00 payment for this should be made in September (using WisePay) and a locker will be allocated. All lockers on site require students to provide their own padlock. Please ensure that a spare key is kept at home in case the main locker key is lost.

Canteen

- Students can use the canteen to purchase hot and cold food at break and lunch. We also have a separate outdoor covered dining area with a hot and cold snacks available from a pod (like a pop up food station!)
- We have a cashless system and parents can set up a 'wise pay' account
- Students pay for their food with biometric access to the Wisepay account





Equipment for school

The following items of equipment are required:

- Blue or black handwriting/biro pen
- Highlighter pen
- Green biro pen
- HB pencils
- Coloured pencils
- Ruler (measuring centimetres)
- Eraser
- Protractor
- Compass
- Scientific calculator
- Glue stick
- Round ended scissors
- Rough note book
- English and Spanish dictionaries (most students will also require a French dictionary)
- Reading book
- Pencil case
- Science lab coat





Getting to school





Queen Elizabeth's Girls' School

Educating Women of the Future

Summer Holiday Activities

Shoebox Presentation

Over the summer holiday we would like you to prepare your shoebox presentation

- ★ Find a shoebox
- ★ Decorate your shoebox with all things about you
- ★ Prepare a short presentation (no longer than 2 minutes)

Here are some suggestions of what you could show:

- Your interests/ hobbies
- Likes/ dislikes
- Your family
- Your summer holiday
- Your achievements



The shoebox presentation is a great way to learn about new peers!

Be creative and use any materials/ props you wish!





QEGS Summer Booklet

- The summer booklet contains a range of fun and quick activities from a number of different subjects
- This will give you a flavour of tasks you may receive from September
- Complete as many of the activities as you wish
- It is not compulsory to complete all the activities
- Please bring your booklet in on Tuesday 5th September



Extension Task

At the very end of your booklet you will find two blank pages. Tell us which activity you enjoyed the most and why :)



Induction Day in September

- Year 7 start school at **8.30am** on **Tuesday 5th September**. Year 7 and Year 12 will be the only students in school.
- Students need to be in full school uniform.
- The Induction Day in September will give students the opportunity to spend time with their form tutor and continue building friendships within their form group
- There will also be a tour of the school buildings and facilities, as well as school photographs and biometrics, the CATS testing will happen later on in September.
- Students will receive their timetable, which will be explained by their tutor
- Students will also deliver their shoebox presentation
- They will need to bring in a breaktime snack, a packed lunch and a water bottle.



Queen Elizabeth's Girls' School Association

Sara Badvie, Chair QEGSA Committee