



Year 11 Parent Information Event



Thursday 5 October 2023



Year 11 Parent Information Event

Music from:

Lilly-Ella Hastie - Flute

Tianna Bingham - Flute

Avani Patel - Piano

Wing Hei Cheung - Piano

Charlotte Garrett-Gunn - Piano



Year 11 Parent Information Event

1. **Welcome** - Mrs Walker, Headteacher
2. **The year ahead** - Mrs Barney, Head of Year 11
3. **Succeeding at Key Stage 4** - Ms Sharma, Associate Assistant Headteacher & Head of Key Stage 4
4. **Maths** - Mrs Khodabacus, Head of Maths
5. **English** - Mrs Madigan, Joint Head of English
6. **Science** - Ms Myrtle, Head of Science
7. **Understanding Reports and Assessments** - Mr Jones, Senior Deputy Headteacher
8. **Wellbeing and Support** - Mrs Parker, Assistant Headteacher & SENCO



Welcome

Mrs Walker, Headteacher



The Year Ahead

Mrs Barney, Head of Year 11



Key Dates for Year 11

Date	Event
19th October	Sixth form open evening
2nd November	English mock exam
W/C 6th November	Art mock and MFL speaking exams
13th-30th November	Mock exams - inclusive of catch up mocks for clashes and missed exams
21st December - 5th January	Christmas break - key break as no exams upon return
10th January	Mock results day
11th January	Year 11 Parents' Evening (online)



Date	Event
5th - 9th February	Mock exams
12th - 16th February	Half term
19th February - 5th March	Mock exams
12th March -13th March	Drama performance exams
18th March	Data report 2
21st - 22nd March	Art GCSE practical
27th March	Progress evening - invitation only
23rd - 26th April	MFL speaking exams
9th May - 25th June	Public exams
22nd August	GCSE results day



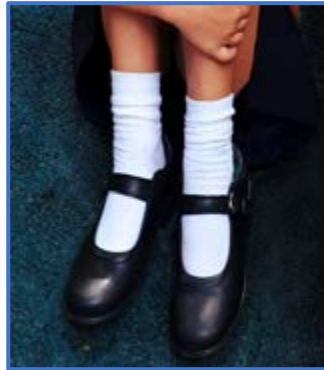
Year 11 Prom

This has been provisionally booked for Monday 1st July.
This will be held at The Shire, St Albans Road.





School Uniform



Socks

- Plain white ankle socks (no logos)



Tights

- Black tights (Oct-May)



Appropriate footwear

- Leather or leather-look plain black flat formal shoes, no plimsolls, trainers, Converse, Vans and no boots (e.g. Kicker boots)

- Only religious necklaces
- No bracelets or rings
- No nose studs or facial studs
- Earrings
 - Plain gold or silver stud earrings in the bottom lobe



Homework Timetable

- Students should only be set homework on days indicated on the timetable
- The timetable indicates staff initials and then the day homework is to be set
- Check Google Classroom as well as planners

	Subject	Group/Teacher	M1	T2	W3	T4	F5	M6	T7	W8	T9	F10
4	Art	B TGL		X				X				
5		D NBS	X						X			
6	Business Studies	C GWH					X				X	
7		D GWH	X						X			
8	Computer Science	B KLG		X								
9	Drama	B JFD		X								
10	English	V1 VBE	X		X				X			X
11		V2 JLI	X		X					X		
12		V3 MEH	X		X				X			X
13		W1 SKT			X		X			X		X
14		W2 DMR	X				X			X		X
15		W3 HHS	X				X	X				X
16		W4 ACH	X				X	X				X
17	French	A MIT			X					X		X
18		C OWN					X		X		X	
19	Geography	A HBY			X					X		
20		B CAT		X				X				
21		C ATL					X				X	
22		D HBY	X						X			
23	Health & Social Care	B KKZ			X					X		
24	History	C ACE					X				X	
25		A OBR			X					X		
26		B MMN		X				X				
27		C MCN					X				X	
28		D1 MCN	X						X			
29	Maths	D2 MMN	X						X			
30		X1 YKS		X		X		X				X
31		X2 OWS		X		X		X				X
32		X3 NKI		X		X		X				X
33		X4 CAA		X		X		X				X
34		Y1 ATR		X		X		X				X
35		Y2 NKI		X		X		X				X
36		Y3 YKS		X		X		X				X
37		Y4 SHG		X		X		X				X
38	Media Studies	C MAM/NRN					X		X		X	
39	Music	A EGY			X					X		
40	PE	BLACK			X					X		



School Attendance & Punctuality

Excellent attendance is expected, however

- Should your daughter be unwell or unable to attend school, please contact the school to inform the Attendance Officer
- Once the registers close and a student is absent, if we have not received communication from parent/ carer, a text will be sent home

Requests for planned absence must be made in writing to:

- Head of Year if for medical reasons (providing evidence)
- Headteacher for all other reasons



Punctuality is also crucial.

Students arriving late to lessons miss key learning time and risk disrupting the learning of others. A prompt arrival ensures optimum learning for all.



Maintaining a balance



What the NHS says constitutes wellbeing:

- Connect with other people
- Be physically active
- Learn new skills
- Give to others
- Pay attention to the present (mindfulness)



Prioritising Year 11

First in for lunch each day in the canteen
Priority in the library around exam periods
A quiet study room is available every lunchtime
A computer room will also be available
Access to the library after school
Various departmental interventions





Contacting Us

Please email office@qegschool.org.uk and mark your email FAO the correct member of staff.



Succeeding at Key Stage 4

Ms Sharma, Associate Assistant Headteacher & Head of Key Stage 4



Learning Techniques

Typical learning strategies we see in the classroom are...

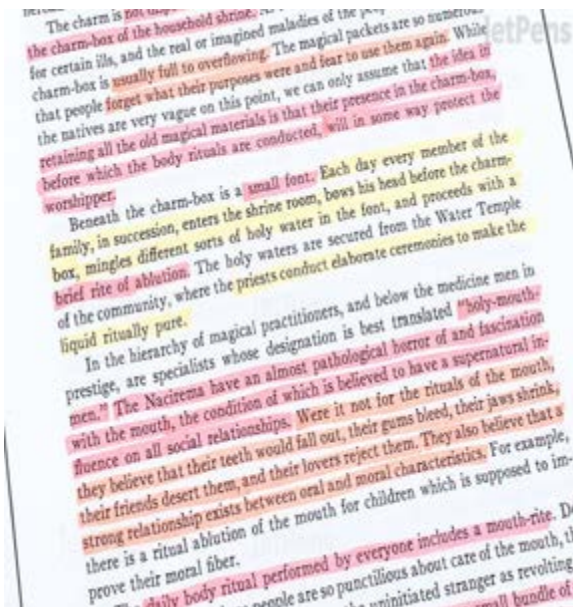
Summarising



Re-reading



Highlighting/underlining





Learning Techniques

What actually works is:

Retrieval Practice

+

Spaced Repetition

+

Interleaving

=

EXAM SUCCESS



Retrieval Practice

Making effort to recall detail about what has been explained without help.

In other words, getting the knowledge out of your head.

This is also called Active Recall

4 Methods of Retrieval Practice

@ImpactWales

Copyright © 2018

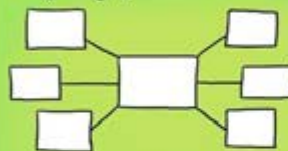
Before you start put away all your books & classroom materials.

Retrieval Practice Examples

- * Exit Tickets
- * Starter quizzes
- * Multiple choice quizzes
- * Short answer tests
- * Free write
- * Think, pair, share
- * Ranking & sorting
- * Challenge grids

BRAIN DUMP

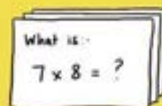
Write, draw a picture, create a mind-map on everything you know about a topic.



Give yourself a time limit, say 3 minutes, then have a look at your books & add a few things you forgot.

FLASHCARDS

Create your own flashcards, question on one side answer on the other. Can you make links between the cards?



You need to repeat the Q&A process for flashcards you fail on more frequently & less frequently for those you answer correctly

QUIZZING

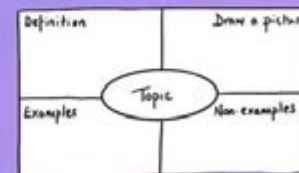
Create practice questions on a topic. Swap your questions with a partner & answer.

Question - What is a metaphor?

- ☐ A comparison using 'like, as, than'.
- ☐ A comparison where one thing is another.
- ☐ A comparison with a human attribute.

KNOWLEDGE ORGANISERS

Complete a knowledge organiser template for key information about a topic.



You can use knowledge organisers to learn new vocab & make links in between subjects or ideas.

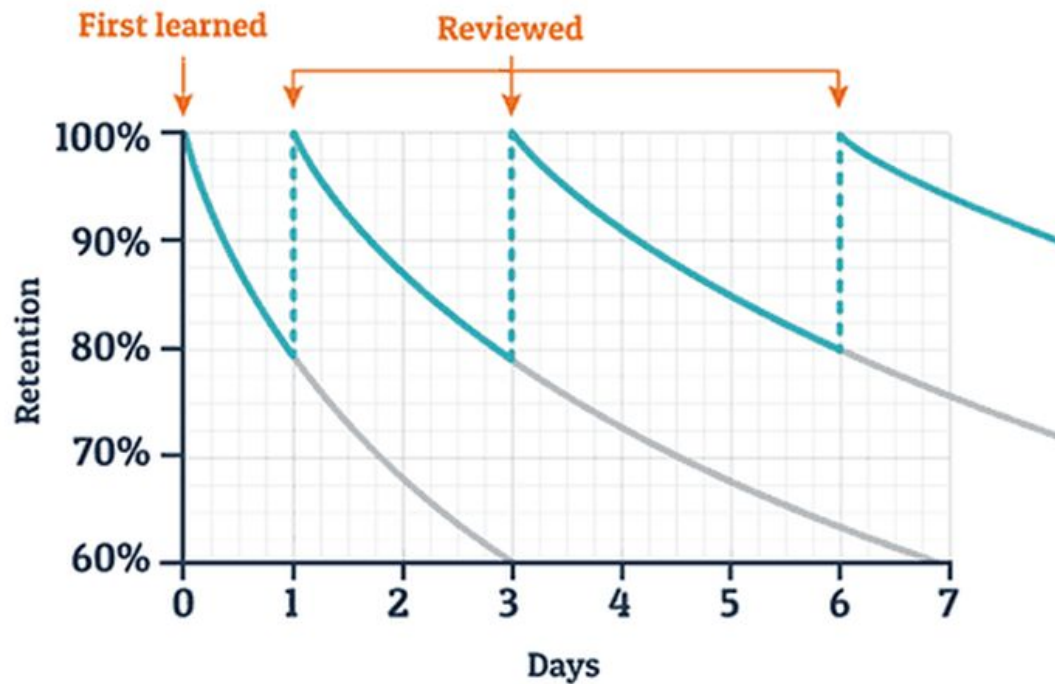
After you have retrieved as much as you can go back to your books & check what you've missed. Next time focus on that missing information



Spaced Repetition

Reviewing what you have learnt at fixed intervals over time to prevent forgetting and aid retention.

Typical Forgetting Curve for Newly Learned Information





Interleaving

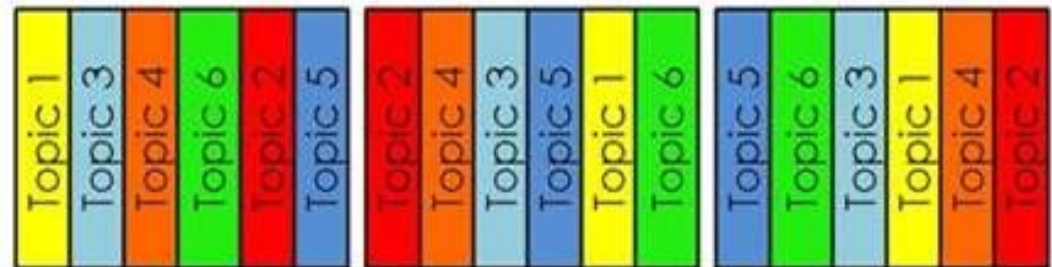
Attempting a variety of problems/topics rather than many examples of the same type of problem/topic.

This means breaking a larger topic into smaller parts and interspersing the learning.

Interleaving can be considered the opposite to mastery and it prevents depth of understanding - but this is a misconception.

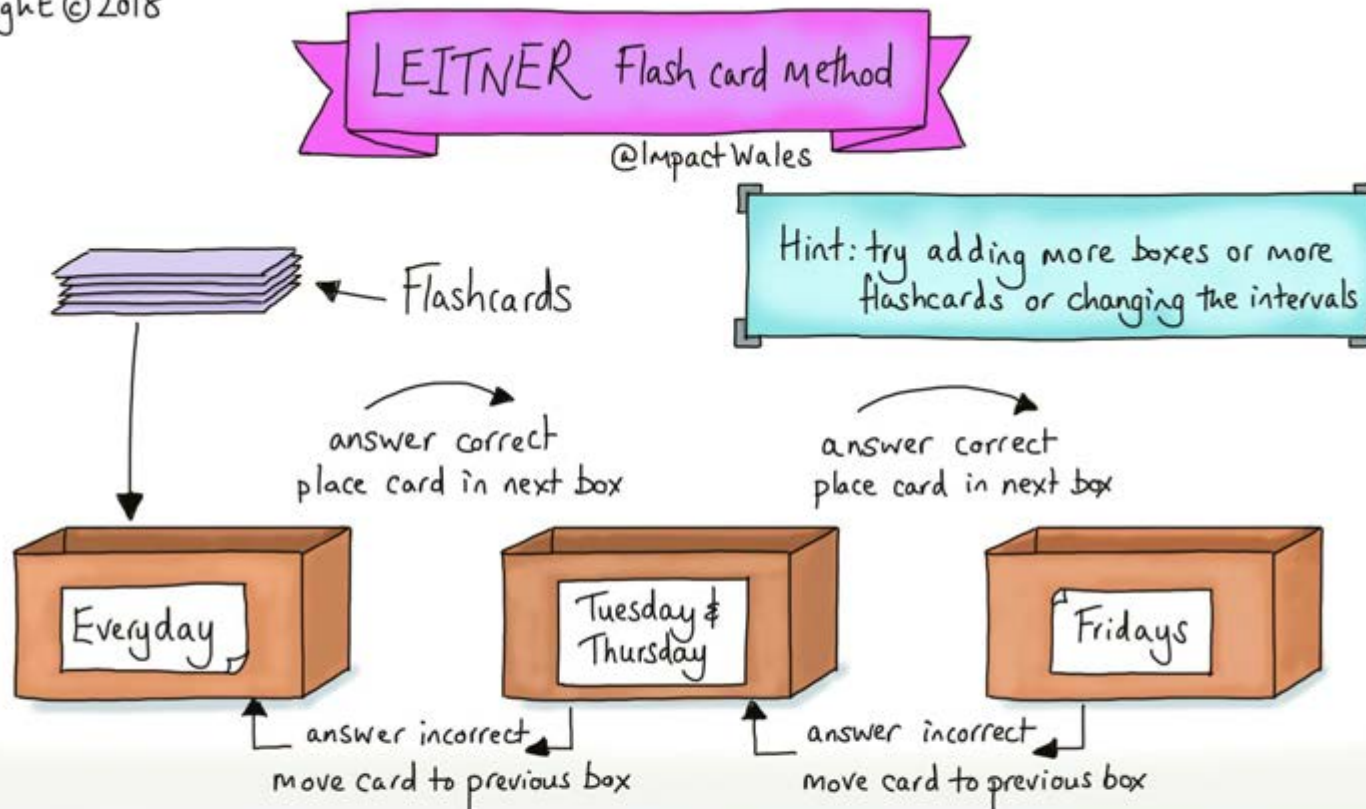


Blocking vs interleaving





Copyright © 2018



An effective use of flashcards to prompt & recall learning using spaced practice proposed by Leitner in the 1970s. It focuses on the proficiency of recall of the learner. Information which is easily recalled has a longer time lapse before the next recall opportunity.



Maths

Mrs Khodabacus, Head of Maths



GCSE (9-1) Mathematics

Examination Board: Edexcel

The qualification consists of three equally-weighted written examination papers:

- Paper 1 is a non-calculator assessment
- Paper 2 is a calculator assessment
- Paper 3 is a calculator assessment

Each paper is 1 hour and 30 minutes long and has 80 marks.



Tiers and grades

- Two tiers are available: Foundation and Higher
- Foundation tier: grades 1 to 5
- Higher tier: grades 3 to 9



The assessment will cover the following contents:

1 Number

2 Algebra

3 Ratio, proportion and rates of change

4 Geometry and measures

5 Probability and Statistics

Each paper will cover all Assessment Objectives.



Formulae provided in the exams

Perimeter, area, surface area and volume formulae

Where r is the radius of the sphere or cone, l is the slant height of a cone and h is the perpendicular height of a cone:

Curved surface area of a cone = πrl

Surface area of a sphere = $4\pi r^2$

Volume of a sphere = $\frac{4}{3}\pi r^3$

Volume of a cone = $\frac{1}{3}\pi r^2 h$



Preparation for Exam in Year 11

In Year 11 we aim to complete the GCSE scheme of work by December/January so students have ample time to prepare for their GCSE Exams.

Students will be provided with a wide range of resources such as:

- Maths revision topic list annotated with MW clip numbers
- Ongoing retrieval quizzes
- Exam topic booklets
- Past papers



How can parents support?

1. **GCSE Past Papers** from the exam board Edexcel website
2. **Mathswatch** - Please ensure that explanatory clips are watched and interactive questions are attempted on a regular basis to help with recall and retention
3. **Home learning** - Please check that home learning is completed to the best of ability.
4. Encourage your child to be organised and ask for help when needed



Maths Equipment

All students are expected to bring the following equipment to every maths lesson:

- Maths exercise books and folders
- Blue or black pen and green pen, highlighters, pencil, eraser and sharpener
- **Scientific Calculator (CASIO)**
- 30cm ruler
- Pair of compasses with pencil and Protractor
- Glue stick





The best way to revise GCSE Maths is to **DO** lots of Maths so:

Practice, practice and more practice



English

Mrs Madigan, Joint Head of English



Founded in 1888

English in Year 11

The course



English is an integrated course offering two GCSEs (of equal status): GCSE English Language and GCSE English Literature. Exam Board: AQA

All classes receive exactly the same curriculum provision and study everything at the same time

All curriculum content will have been covered by the end of this half term.

Year 11 is used to re-visit, consolidate, revise and prepare for the exams. This is when we do specific teaching of exam technique / essay writing.

GCSE English Language:

PAPER 1: (1 $\frac{3}{4}$ hours) *'Explorations in creative reading and writing'*
50%

SECTION A: Reading (Extract from fiction text: 4 questions testing different reading skills)

SECTION B: Writing (Creative writing – to narrate or describe)

PAPER 2: (1 $\frac{3}{4}$ hours)
'Writers' viewpoints and perspectives' 50%

SECTION A: Reading (2 non fiction extracts: 4 questions testing different reading skills)

SECTION B: Writing (Creative writing – to argue, persuade or explain)

GCSE English Literature:

PAPER ONE: (1 $\frac{3}{4}$ hours) 40%

- **Section A:** *Romeo and Juliet* (Shakespeare)
- **Section B:** *A Christmas Carol* (Dickens)

PAPER 2: (2 $\frac{1}{4}$ hours) 60%

- **SECTION A:** *An Inspector Calls* (Priestley)
- **SECTION:** AQA Anthology poetry – comparison of two poems
- **SECTION C:** unseen poetry

Current work

- We are currently studying '*A Christmas Carol*' for Literature Paper 1
- This will be finished by October half term
- Last term, they studied '*Romeo and Juliet*' for Literature Paper 1
- Homework this half term is to **revise 'Romeo and Juliet'**
- Over the half term break they will need to **revise 'A Christmas Carol' and 'Romeo and Juliet'**

MOCK EXAM: Literature Paper 1 Thursday 2nd November

November mock exams

GCSE English Language Paper 1

GCSE English Language Paper 2

- Lesson time after half term (up to the mocks) will be spent revising for the Language papers
- Students will be given past papers by their teacher
- Homework will be revision / preparation for the Language mocks

November mocks – end of term

Following the mock period, we will:

- Reflect on the exams and provide feedback
- Start revising for the Literature Paper 2 mock (February 8th 2024)

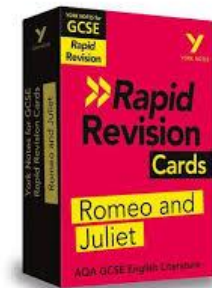
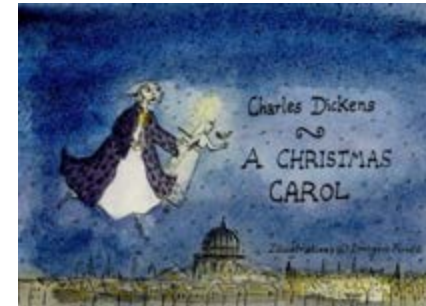
After Christmas, we will revisit each text / exam again ready for the March mocks.

English revision:


- We will break it down and provide specific tasks for them to complete
- They will be set tasks on Google Classroom
- Their classroom will have a bank of materials on each exam / text including retrieval quizzes
- They have been given a revision pack for each text (also available electronically)
- For each Literature text, they need to *learn quotes and contextual information **off by heart***

Additional revision resources:

- BBC Bitesize (online)
- BBC Teach (KS4)
- Sparknotes (free online / free App)
- Kahoot! Quizzes
- Study guides: York Notes / CGP guides
- Revision cards (York / Letts / CGP)
- FlipsCo cards
- Film versions of 'Romeo and Juliet', 'A Christmas Carol' and 'An Inspector Calls' available online
- There are a FEW useful YouTube videos (but also some to avoid e.g Mr Bruff)
- Click Revision videos for An Inspector Calls



» Back to results



GCSE English

Romeo & Juliet

The Text Guide

Includes Free Online Edition & Digital Quizzes

Roll over image to zoom in

Read sample

GCSE English Shakespeare Text Guide - Romeo & Juliet includes Online Edition & Quizzes for the 2024 and 2025 exams

Paperback

by CGP Books (Author, Editor)

4.7 ★★★★★ 1,755 ratings

Part of: CGP GCSE English Text Guides (17 books)

Kindle Edition
£5.65

Paperback
£5.95 prime

Read with Our **Free App**

35 Used from £0.15 -
19 New from £5.00
1 Collectible from £51.23


Save 5% on any 4 qualifying items | [Terms](#)

Learn your set text inside out with CGP's Text Guide – the UK's No.1


In this Text Guide, we've explained everything students need to know about Shakespeare's Romeo and Juliet – and it's fully up-to-date for all major exam boards.

Inside, you'll find clear, thorough notes on the play's context, plot, characters, themes and language.

▼ Read more

 Report incorrect product information.

ISBN-10	ISBN-13	Edition
1841461180	978-1841461182	Standard



GCSE English Shakespeare Text Guide - Romeo & Juliet ...

Paperback

★★★★★ 1,755 ratings

New

£5.95

Save 5% on any 4 qualifying items | [Terms](#)

prime One-Day

FREE delivery Tomorrow, 3 October. [Details](#)

[Add to Basket](#)

▼ See more

33 other options

sorted by price + delivery: low to high

[Filter \(4\)](#) ▼

Used - Like New ✕ Used - Very Good ✕ Used - Good ✕ +1 [Clear all](#)

Used - Very Good

£2.94

FREE delivery 6 - 10 October. [Details](#)

[Add to Basket](#)

Condition

This book is in very good condition and will be shipped within 24 hours of ordering. The cover may have...[More](#)

Dispatches from

awesome_books_001

Sold by

awesome_books_001

★★★★★ (1254151 ratings)

92% positive over last 12 months

Useful revision strategies for English

- Re-read the texts (listen to audio versions)
- Watch the film / tv versions
- Mind Maps / flash cards to learn quotes
- Quizzes
- **Plan** past exam questions (www.aqa.co.uk)
- Read range of non fiction articles

Ways to help

- Encourage a routine of regular, short revision tasks e.g. online (for learning quotes)
- Encourage a re-reading of the texts (without distraction e.g. electronic device)
- But also.. use the technology! (Apps like Sparknotes, Click revision on YouTube, BBC Bitesize are all excellent)
- Watch the films together (with subtitles on)
- Discuss topical issues



Library at QEGS



- A wide range of **study guides** and **textbooks**, as well as supplementary non-fiction books.
- Access to **computers** for online resources.
- A calm space for **quiet study**.
- Free **online library** (e-Platform), accessible at school or at home on desktop or via the app.
- After school **drop-in sessions** with LSAs every day.
- Drop-in sessions with **Maths** teachers on Wednesdays.

Students in exam years are given priority into the library at lunchtime during the lead up and over the duration of the student's mock and summer exams.



Science

Ms Myrtle, Head of Science



Science: Course structure

AQA - Trilogy (Combined Science)

- Biology, Chemistry, Physics (Triple Science)

2 Papers for each Science so 6 papers in total

1 hour 15 minutes for Trilogy each paper 70 marks

1 hour 45 minutes for Triple each paper 100 marks

Foundation and Higher Tiers -

Ofqual recommend students working at Grade 5 sit the F tier



Biology	Chemistry	Physics
<p>Paper 1</p> <p>Cell structure and transport Cell division Organisation and the digestive system Organising plants and animals Communicable diseases Preventing and treating disease Non communicable diseases Photosynthesis Respiration</p>	<p>Paper 1</p> <p>Atomic structure The periodic table Structure and bonding Chemical calculations Chemical changes Electrolysis Energy changes</p>	<p>Paper 1</p> <p>Conservation and dissipation of energy Energy transfer by heating Energy resources Electric circuits Electricity in the home Molecules and matter Radioactivity</p>
<p>Paper 2</p> <p>The human Nervous system Hormonal coordination <i>Homeostasis in action</i> Reproduction Variation and evolution Genetics and evolution Adaptations, interdependence and competition Organising an ecosystem Biodiversity and ecosystems</p>	<p>Paper 2</p> <p>Rates and equilibrium Crude oil and fuels <i>Organic reactions</i> <i>Polymers</i> Chemical analysis The Earth's atmosphere The Earth's resources <i>Using our resources</i></p>	<p>Paper 2</p> <p>Forces in balance Motion Force and motion <i>Force and pressure</i> Wave properties Electromagnetic waves <i>Light</i> Electromagnetism <i>Space</i></p>



Science Equipment

All students are expected to bring the following equipment to lessons AND all exams:



- Black pens, pencils, eraser and sharpener
- 30cm ruler
- Protractor
- Scientific calculator



How to best support students to revise?

1. **Kerboodle** - Online textbook, online practice tests and progress tests, revision strategies.
2. **MyGCSE Science** - total revision package purchased by the school - the whole syllabus is broken down into sections consisting of a video, recall multiple choice questions, a longer exam question and mark scheme.
3. **GCSE Past Papers** from the exam board AQA (printed copies) and Physics and Maths tutor website.



Understanding Reports and Assessments

Mr Jones, Senior Deputy Headteacher



Term 1 report

Subject		Engagement	Home Learning	Teacher
Drama		2	1	JFD
English		2	2	NMN
French		2	2	MIT
History		2	2	MCN
Mathematics		1	1	DWS
PE Core		2	n/a	CMY
PHSCE		2	n/a	DSK
Religious Studies		1	1	JPR
Science	Biology	1	2	HNA
	Chemistry	1	1	PKI
	Physics	2	1	DBG
Technology		1	1	RPE



Engagement and Home Learning

Engagement

1. **Outstanding** - fully engaged, excellent commitment, participates and contributes in lessons, excellent effort and behaviour.
2. **Positive** - engaged, very good commitment and effort with very good behaviour, mostly participates and contributes in lessons.
3. **Needs to improve** - usually focused and committed, sometimes participates and contributes, misses some opportunities to be more fully engaged and sometimes distracted.
4. **Unacceptable** - variable/lacking focus and commitment, easily distracted, poor participation and contribution.

Home Learning

1. **Outstanding** - homework is always completed, presented on time and to a standard that represents the student's best efforts
2. **Positive** - homework is mostly completed, presented on time and usually to a standard that represents the student's best efforts
3. **Needs to improve** - homework is not consistently presented on time and of a satisfactory standard
4. **Unacceptable** - homework completion, presenting on time or standard is poor



GCSE Target Grades

GCSE

9

8

7

6

5

4

3

2

1

KS2

Sig more than 100

More than 100

At or close to 100

Less than 100



GCSE Target Grades

GCSE

9

8

7

6

5

4

3

2

1

KS2

Sig more than 100

More than 100

At or close to 100

Less than 100



GCSE Target Grades

GCSE

9

8

7

6

5

4

3

2

1

KS2

Sig more than 100

More than 100

At or close to 100

Less than 100



Term 2 Report

Subject	Spring		Engagement	Home Learning	KS4 Minimum	Teacher
	Curr	Pred				
Business Studies	6C	6A	2	1	6	GWN
English	6A	7B	1	1	7	NMN
English Literature	6C	6A	2	1	7	NMN
History	4B	5C	1	2	6	MCN
Mathematics	5A	6A	1	2	7	DWS
PHSCE	n/a	n/a	2	n/a	n/a	DSZ
PE Core	n/a	n/a	2	n/a	n/a	ACN
Religious Studies	3A	4A	2	1	5	JPR
Science Combined	32	43			55	
		Biology	2	1		HME
		Chemistry	2	2		EWT
		Physics	2	1		DGB
Spanish	5C	6A	1	1	7	ABL



Inclusion and Wellbeing in Year 11

Mrs Parker, Assistant Headteacher & SENCO



QEG student support

MASH and/or police referral, Referral to alternative provision

Early Help referral, GP ,CAMHS . EP and/or EHCP application

Referral to CCAP, BICs, Grief encounter, BYCAS, EWO, Exam Access arrangements

Inclusion support, SENCo, Deputy SENCo, Learning Mentor , Behaviour Manager, Managing Anxiety Course, Anger Management, Learning Support Group, Transition Group, Pastoral Reports, Social Skills Intervention and EAL

Tutor time, assembly themes, PSHE, careers , behaviour expectations high quality teaching , .b mindfulness, restorative practices, qualified onsite pediatric nurse and CPOMS .



Inclusion

If you have concerns about your child's
Well-being:

- Please contact their **form tutor** by email

Progress:

- **In a specific subject:** speak to their class teacher and/or Head of Dept via email
- **In a range of subjects:** speak to their Head of Year via email



Inclusion

- If your child has a **learning difficulty** speak to Mrs Parker or Mrs Matty
- If your child has a **medical need** then please contact our nurse Mrs Avworo



Year 11 Specific

Preparation for GCSE examinations:

- Mock exams
- Past papers
- Techniques for revision
- Getting used to sitting exams in the sportshall



Sixth Form Open Evening

**Thursday
19 October 2023**

**6.00pm - 8.00pm
(in school)**

Year 11 Parents' Evening

**Thursday
11 January 2024**

**2.00pm - 6.00pm
(online)**



Thank you for attending

Please give us feedback on today's event using our online evaluation form.

