



School Uniform

Students are required to wear their uniform correctly at all times while in school but also when travelling to and from the school since students represent us in the wider community during those times.

Due to the school's heritage and its name's connection to the Royal Family, our name and logo are Trade Marked by special permission of the Lord Chamberlain's Office, with conditions under which the name and logo can be used. To meet these conditions, we have two contracted suppliers of our uniform:

<p>Uniform4Kids https://www.uniform4kids.com/collections/queen-elizabeths-girls-school</p>	<p>Available online and in stores in Enfield, Mill Hill and Temple Fortune.</p>
<p>Smiths Schoolwear https://www.smithsschoolwear.co.uk/c/484/Queen-Elizabeths-Girls-School</p>	<p>Available online and in stores in Enfield and Cockfosters</p>

Please note that any other supplier who claims to stock our uniform, is selling counterfeit products of poor quality and is in breach of Trade Mark laws.

Compulsory Items

		
<p>Navy blazer with Tudor rose logo</p>	<p>Light blue kilt with Tudor rose logo</p>	<p>Light blue long sleeved open neck blouse</p>



Light blue short sleeved
open neck blouse



Black opaque tights



White lab coat



White apron



Navy School polo shirt for
PE lessons/sports



Navy School shorts for PE
lessons/sports



Navy School track suit top
for PE lessons/sports



Light blue sports socks for
PE lessons/sports



Navy School leggings for
PE lessons/sports

		<p>School Shoes & Sports Trainers (see below for details)</p>
<p>Navy or black swim suit</p>	<p>Swimming cap (name to be written on outside)</p>	



**This item can be substituted for tailored navy trousers (see below)*

Optional Items

		
<p>Navy tailored 'smart' trousers</p>	<p>Navy v-neck sweater with Tudor rose logo*</p>	<p>White ankle socks (for use 1st May – 30th Sept)</p>
		
<p>Plain black or navy outdoor coat Various Suppliers</p>	<p>Plain navy scarf for outdoor use Various Suppliers</p>	<p>Discrete plain black or navy hair band or ties Various Suppliers</p>

Footwear

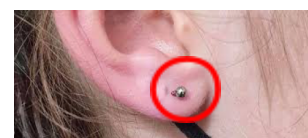
Appropriate footwear can be purchased from any supplier, providing it meets the requirements stated below. Images are for illustrative purposes.

	
<p style="text-align: center;">School Shoes</p> <p>Leather or leather-look plain black flat formal shoes (no plimsoles, Converse, Vans or boots)</p>	<p style="text-align: center;">Trainers</p> <p>Comfortable sports trainers with non-marking soles (plimsoles are not permitted)</p>

Further details regarding uniform

Jewellery

✓ Students are allowed only a small plain silver or gold stud (matching) which may be worn in each ear lobe. Students are allowed a small religious symbol to be worn inside the blouse (and covered).



✗ We do not allow piercings to be worn on the tongue, gum, inner lip, cheek, eye brow, wrist, nose or upper ear (only the bottom of the lower ear lobe is allowed). Returning from holidays with piercings is not acceptable. The same rules apply.


Socks, Tights and skirt

Opaque plain black tights are the uniform standard all year.



✓ White ankle socks are allowed from the 1st May until the 30 Sept.

Skirt must not be more than 5cm above the knee and the whole school logo should be visible at all times.



Plain black tights means there should be no patterns of any sort.

-  The white ankle socks should not be frilly, include colour or have a bow. They should be without a logo or emblem and any other colour sock is not permitted. Ankle bracelets of any description cannot be worn.
- Skirt rolled up is not permitted.


School shoes

-  Sensible flat walking shoes in black leather/leather look.
-  Trainers, boots, Vans, Converse and casual shoes are not permitted. Kickers (or similar) coming up over ankles are not permitted.

Nail polish, false nails, hair and makeup

- Hair styles should be simple and should not draw undue attention to a student.
-  Hair colour/tints should be within the natural range only.
- Hair coverings can be worn for religious reasons and must be plain, undecorated navy or black.
- Nail colour or nail extensions should not be worn. Makeup and false eyelashes are also not permitted.
-  Students found to be wearing makeup will be instructed to remove it.
- No metal clasps for use in braided hair.

Accessories

-  Toys and fashion trends like slime and fidget spinners are not permitted. This list may be added to.

Each instance of incorrect uniform is recorded and when there are five instances we deem the infringement to be persistent and a student will usually have a day in internal exclusion.

General Pointers

- All items of uniform **MUST** be clearly labelled with your daughter's name.
- Jewellery will have to be removed for any practical activities and hair must be tied back appropriately.
- Subject specific risk assessments may necessitate amendments to the above expectations.